

# Seafox Ahmed



**MAIN CRANE CAPACITY 110 t | ACCOMMODATION 300 POB | MAX WATER DEPTH 91 m | DECK SPACE 600 m<sup>2</sup>**

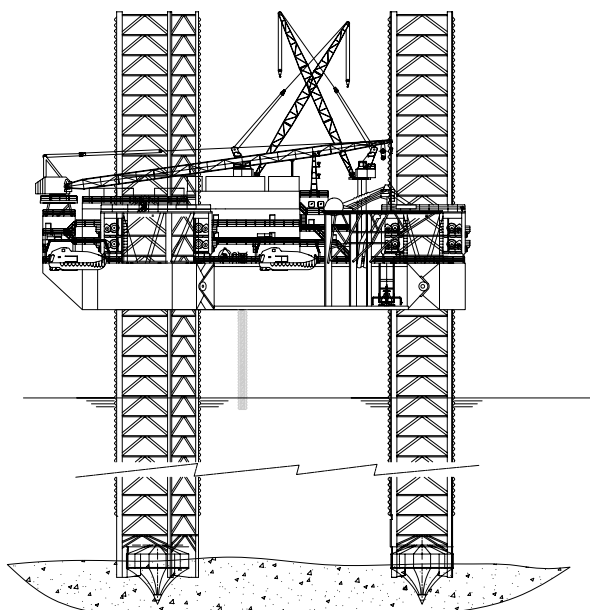
Seafox Ahmed is a three-legged, self-elevating jack-up unit for accommodation and offshore support services built in Vicksburg, Mississippi (USA), by Marathon LeTourneau. She was originally converted to a jack-up ASV in 1993 by Lamprell, in Sharjah, UAE. The last upgrade took place in 2007 and the Special Survey in 2015.

The maximum Person on Board (POB) capacity for this vessel is 300 POB. Seafox Ahmed has a maximum water depth operating capability of 91 m. She has three cranes currently configured to lift 37.6 t. She also has 600 m<sup>2</sup> of free deck space. The high quality of life on board is thanks to various leisure facilities and additional health and well-being amenities.

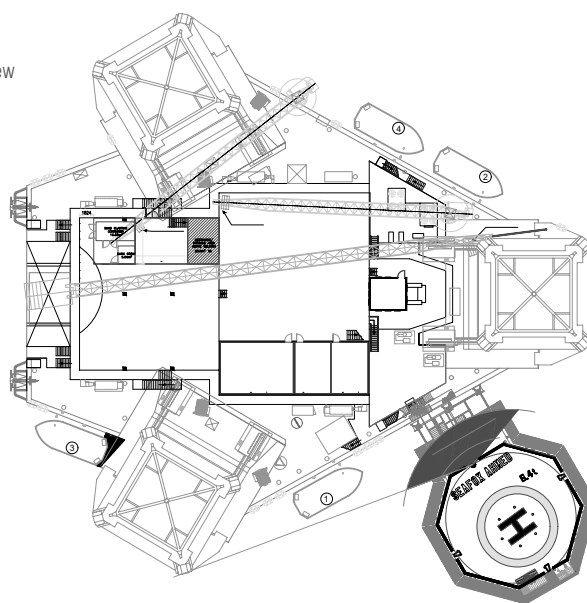
# Seafox Ahmed

## Accommodation & Multi-support Unit

Side view



Top view



### GENERAL

Name	Seafox Ahmed
Flag / P.O.R.	Marshall Islands
Design	Marathon Le Tourneau
Year built / Conversion date	2007
Last special survey	2015
Class	Det Norske Veritas (DNV)
Callsign	V7GH7
IMO nr.	8754346
Environmental Conditions	Air -10c(14F) Water 0c (32F)

### DIMENSIONS

Length	72.18 m
Max length	72.18 m
Breadth	72.22 m
Depth	8 m
Loadline draft	5.03 m
Gross Tonnage	7419

### DECK

Deck capacity	2 t/m <sup>2</sup>
Deck space	600 m <sup>2</sup>

### LEGS

Number of legs	3
Type	Square truss spuds
Max Water Depth	91 m
Length	127.0 m
Tip of can below hull full raised position	1.60 m
Spud Can details	Width 11.00 m Depth 10.00 m

### HELICOPTER DECK

Suitable	Bell 212 / 214
D-value	22.5 m
Safe Working Load (Tonnes)	7
Compliant	CAP 437

### POWER GENERATION

Electricity Diesel/Electric	5 x CAT D398 diesel engines producing 600kW
Emergency Diesel Generator	1 x CAT D343 diesel engine

### JACKING SYSTEM

Type	Electro Mechanical Gear Motor / Rack & Pinion
Capacity	4354 t preload per leg
Average speed	0.45 m/min 1.5 ft/min

Details in this specification are correct at the time of publishing. However they may differ from time to time due to project specific alterations. Upon request project specific arrangements and specifications can be provided.

### VARIABLE LOAD

Operational	1134 t
-------------	--------

### LIFE SAVING EQUIPMENT

Rescue Boat	1 x 15 POB
Lifeboats/Type	4 x 80 man TEMPSC accommodating 320 POB
Liferafts/Type	15 x 25 POB TOB Type

### ENVIRONMENTAL SURVIVAL CRITERIA

	Normal	Survival
Water depth	73.15 m	91.44 m
Wave height	10.67 m	15.54 m
Airgap	9.1 m	9.1 m
Period	11.57 Sec	13.28 sec
Current	0.5 m/s	0.5 m/s
Wind speed	36.05 m/s	59.74 m/s

### PROPULSION

Propulsion	N/A
Thrusters	N/A
Speed	N/A

### MOORING SYSTEM

Mooring winches	4 x 50,000 lbs
Achors	4 x 10,000 lbs
Anchor type	Danforth

### CRANES

Port Crane	Marathon Le Tourneau PCM 120-AS Max. 37.6 t @ 9.7 m Min: 4.5 t @ 30.5 m
Starboard Crane	Marathon Le Tourneau PCM 120-AS Max. 37.6 t @ 9.7 m Min: 4.5 t @ 30.5 m
Stern Cranes	Manitowoc 12000 Series Max. 22.6 t @ 12.6 m Min. 12.4 t @ 48.8 m

### ACCOMMODATION

Capacity	300
Facilities	Sr & Jr Recreation Room Sr & Jr Mess Hall Laundry

### OTHER RELEVANT INFORMATION

Fuel Storage Capacities	190 t
Potable Water Storage Capacity	360 t
Water Maker Capacity per day	150,000 litres per day
Fuel Consumption - Steaming	N/A
Fuel Consumption - On full Load	7 t per day
Gangway	1 x 25.5m