

Seafox 4

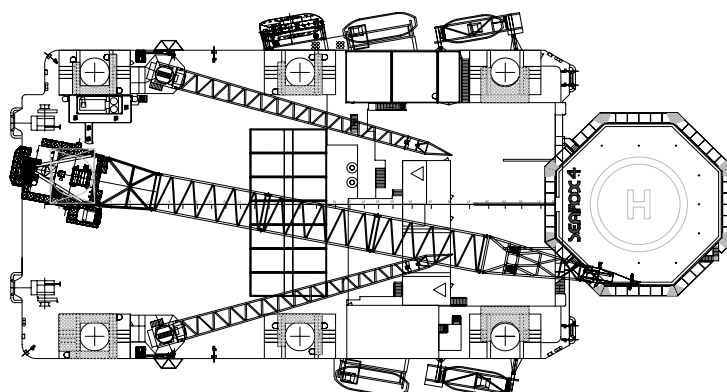
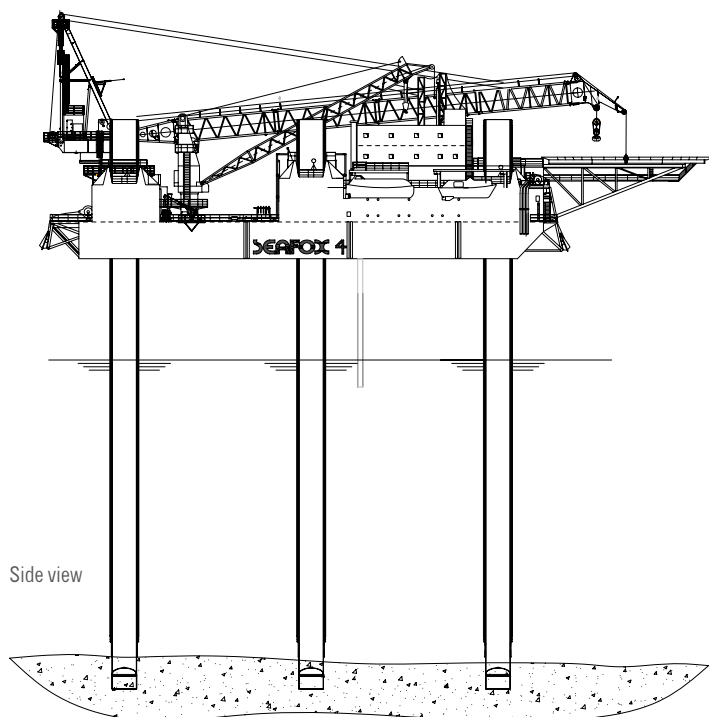


MAIN CRANE CAPACITY 300 t | ACCOMMODATION 153 POB | MAX WATER DEPTH 45 m | DECK SPACE 1000 m²

Seafox 4 is a six-legged, self-elevating jack-up unit for accommodation, construction, maintenance, and well services. The unit was built to American Bureau of Shipping (ABS) classification requirements and is designed to operate throughout the year in water depths of up to 45 meters. The unit offers permanent accommodation for 153 Persons on Board (POB) and has an accepted UK Safety Case for accommodation, maintenance, and well-service activities in the Dutch and UK sectors. Life on board is pleasant and positive thanks to the unit's leisure facilities and health and well-being amenities.

Seafox 4

Accommodation & Multi-support Unit



GENERAL

| | |
|------------------------------|---------------------------------------|
| Name | Seafox 4 |
| Flag / P.O.R. | Isle of man / Douglas |
| Design | Transocean |
| Year built / Conversion date | 2015 |
| Last Special Survey | 2015 |
| Class | ABS \ddagger A1-Self Elevating Unit |
| Callsign | 2BIF7 |
| IMO nr. | 8756148 |

DIMENSIONS

| | |
|----------------|---------|
| Length | 68.79 m |
| Max length | 97.25 m |
| Breadth | 52.78 m |
| Depth | 5.44 m |
| Loadline draft | 4.19 m |

DECK

| | |
|---------------|--|
| Deck capacity | 3.7 t/m ² , 20.0 t/m ² |
| Deck space | 1000 m ² |

LEGS

| | |
|-----------------|----------------------|
| Number of legs | 6 |
| Max Water Depth | 45.7 m |
| Length of legs | 84.30 m |
| Type of legs | Circular closed tube |

HELICOPTER DECK

| | |
|----------------------------|---------------------------|
| Suitable | S61-N including refueling |
| D-value | 22 m |
| Safe Working Load (Tonnes) | 9.3 t |
| Compliant | Cap 437, BSL D 5-1, HCA |

POWER GENERATION

| | |
|-----------------------------|--------------------------|
| Electricity Diesel/Electric | 3x 600 kW, 440 V / 60 Hz |
| Emergency Diesel Generator | 1x 250 kW |

Details in this specification are correct at the time of publishing. However they may differ from time to time due to project specific alterations. Upon request project specific arrangements and specifications can be provided.

JACKING SYSTEM

| | |
|---------------------|--|
| Type jacking system | Electric Rack & Pinion |
| Capacity | 2200 t (centre legs) 2100 t (corner legs) |
| Average speed | 0.3 m per min |

VARIABLE LOAD

| | |
|-------------|---------------------------------------|
| Operational | 2200 t (elevated) 1100 t (jacking) |
|-------------|---------------------------------------|

LIFE SAVING EQUIPMENT

| | |
|----------------|--|
| Rescue Boat | 1 |
| Lifeboats/Type | 2x 61 person, 1x 50 person, 1x 44 pers (98kg) |
| Liferafts/Type | 4x 25 person, 4x 20 person |

ENVIRONMENTAL CRITERIA

| | |
|-------------------|----------|
| Water depth (LAT) | 45.7 m |
| Wave height | 14.5 m |
| Airgap | 18 m |
| Period | 10.2 sec |
| Current | 0.5 m/s |
| Wind speed | 45.0 m/s |
| Soil penetration | 3.0 m |

MOORING SYSTEM

| | |
|-----------------|---------------------------------|
| Mooring winches | 4x single drum, 30 t, 60 m wire |
| Achors | 4x 5.0 t |
| Anchor type | Delta Flipper |

CRANES

| | |
|-----------------|---|
| Port Crane | Liebherr BOS Crane Max: 50 t @ 12 m radius Min: 5 t @ 36.6 m radius |
| Starboard Crane | Liebherr BOS Crane Max: 50 t @ 12 m radius Min: 5 t @ 36.6 m radius |
| Stern Cranes | Kenz 300 crane Max: 300 t @ 26 m radius |

ACCOMMODATION

| | |
|-------------|--|
| Capacity | 153 |
| Facilities: | Galley, Mess room, Stores, Recreation rooms, Gym, Change room, Hospital facilities, Conference room, Offices |