

# Seafox 7



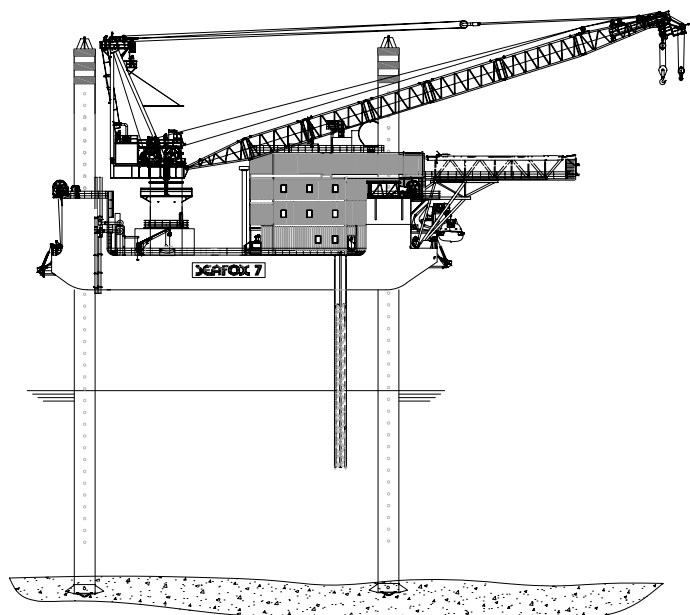
MAIN CRANE CAPACITY 270 t | ACCOMMODATION 113 POB | MAX WATER DEPTH 40 m | DECK SPACE 700 m<sup>2</sup>

Seafox 7 is a four-legged, self-elevating jack-up unit for accommodation, construction, maintenance, and well services. The unit was built to American Bureau of Shipping (ABS) classification requirements. She was specifically designed to withstand harsh offshore environments and conditions and is capable of operating throughout the year in water depths of up to 40 meters. The Seafox 7 offers permanent accommodation for 113 Persons on Board (POB). The unit has an accepted UK Safety Case for accommodation, maintenance, and well-service activities in the Dutch and UK sectors. The range of leisure facilities and health and well-being amenities allow for a pleasant experience for those on board.

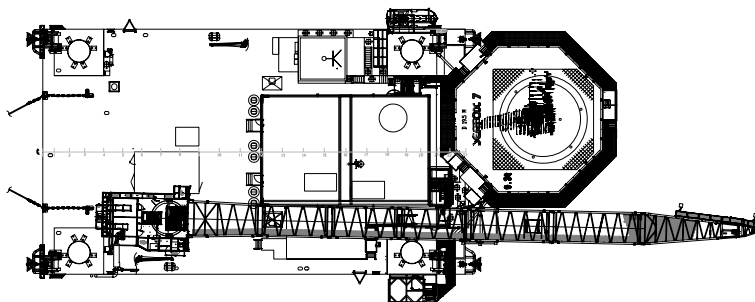
# Seafox 7

## Accommodation & Multi-support Unit

Side view



Top view



### GENERAL

Name	Seafox 7
Flag / P.O.R.	Isle of man / Douglas
Design	MSC SEA-2000
Year built / Conversion date	2007 / 2009
Last Special Survey	2018
Class	ABS A1-Self Elevating Unit
Callsign	2BGC6
IMO nr.	8769717

### DIMENSIONS

Length	55.50 m
Max length	75.5 m
Breadth	32.20 m
Depth	5.0 m
Loadline draft	3.35 m

### DECK

Deck capacity	8.0 t/m <sup>2</sup>
Deck space	700 m <sup>2</sup>

### LEGS

Number of legs	4
Max Water Depth	40.0 m
Length of legs	78.85 m
Type of legs	Circular with holes with spud cans
Spud Can details	19.6 m <sup>2</sup>

### HELICOPTER DECK

Suitable	EC 225, Super Puma or equal, including refueling
D-value	19.5 m
Safe Working Load (Tonnes)	9.3 t
Compliant	Cap 437, BSL D 5-1, HCA

### POWER GENERATION

Electricity Diesel/Electric	2 x 630 kW, 2x 150 kW, 400 V, 50 Hz
Emergency Diesel Generator	1 x 150 kW

Details in this specification are correct at the time of publishing. However they may differ from time to time due to project specific alterations. Upon request project specific arrangements and specifications can be provided.

### JACKING SYSTEM

Type jacking system	MSC hydraulic positive engagement system
Capacity	2000 t per leg
Average speed	0.25 - 0.60 m/min

### VARIABLE LOAD

Operational	1120 t
-------------	--------

### LIFE SAVING EQUIPMENT

Rescue Boat	1
Lifeboats/Type	2x 65 person (98 kg) 1x 30 person (98kg)
Liferafts/Type	4x 35 person

### ENVIRONMENTAL CRITERIA

Water depth (LAT) Summer	40.0 m
Wave height	14.65 m
Period	12.7 sec
Current	1.0 m/s
Wind speed	39.0 m/s
penetration	3.0 m
Airgap	13.5 m (max. 24.0m)

### MOORING

Mooring winches	4x single drum, 30 t, 500 m wire
Achors	4x 3.0 t
Anchor type	Delta Flipper

### CRANES

Port Crane	N/A
Starboard Crane	Favco PC 300 HD Offshore crane Max: 270 t @ 22 m radius Min: 30 t @ 72 m radius
Stern Cranes	N/A

### ACCOMMODATION

Capacity	113 / 137 incl. TLQ's
Facilities:	Galley, Mess room, Stores, Recreation rooms, Gym, Change room, Hospital facilities, Conference room, Offices, HVAC, Sewage treatment, Internet room