

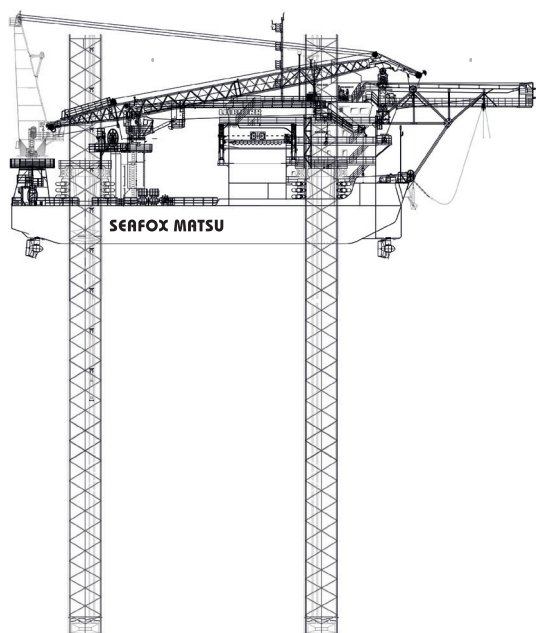
Matsu



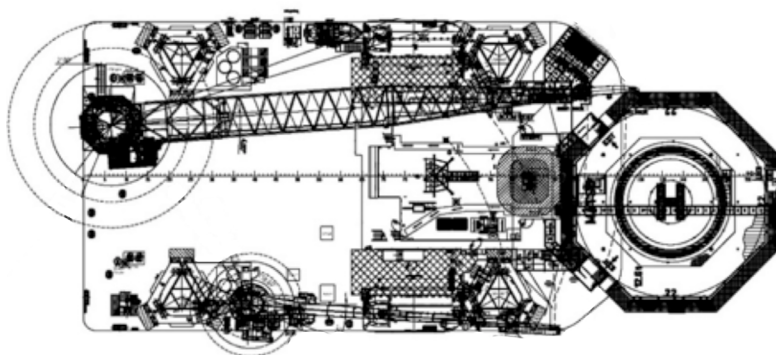
MAIN CRANE CAPACITY 300 t | ACCOMMODATION 150 POB | MAX WATER DEPTH 70 m | DECK SPACE 1012 m²

Seafox Matsu

Multi-Purpose DP2 Self Propelled Jack-up



Side view



Top view

GENERAL

Name	Matsu
Flag	Singapore
Design	CMHI, China
Built	2017
Class	ABS, A1, Self Elevating Unit, AMS, ACCU, DPS-2, HELIDK, CRC, Wind IMR, HAB(OS)

DIMENSIONS

Length	61.0 m
Max Length	76.0 m
Breadth	36.0 m
Depth	6.0 m
Loadline Draft	6.0 m (incl. thrusters)

DECK

Deck capacity	5.0 ton/m ²
Deck space	1012 m ²

LEGS

Number of legs	4
Max Water Depth	70.0 m
Length of legs	94.2 m
Type of legs	Triangular truss-type
Spud Can details	Can with Pin

HELICOPTER DECK

Helicopter type	Sikorsky S61 / S92
D-value	22.2 m diameter

POWER GENERATION

Electricity Diesel/Electric	4x Main Diesel Engine, 1700ekW Generator, 690V, 60Hz, Caterpillar 3512C
Emergency Diesel Generator	1x Emergency Generator Set, 525ekW, 440V, 60Hz, Caterpillar C18

JACKING SYSTEM

Type jacking system	Electric Rack and Pinion
Capacity	153t per pinion
Speed	Maximum ie 0.8 and 1.2

LIFE SAVING EQUIPMENT

Lifeboats	2 x 150 persons
Liferafts	12 x 25 persons
Rescue Boat	1 x 15 persons

CONTROL SYSTEMS

Kongsberg Dynamic Positioning Control System according to ABS DP2
Navigation and Communication systems according to IMO Requirements

AUXILIARY EQUIPMENT

Water Maker	2200 t (elevated)
Sewage Treatment	1 set, 150/day

TANK CAPACITY

Portable Water	421 m ³
Fuel Tank	466 m ³
Water Ballast	900 m ³
Lubrication Oil Tank	9.6 m ³

DESIGN TEMPERATURE

Steel Design Temperature	-10°C (except Spudcan) 0°C for Spudcan
--------------------------	---

For AC and Ventilation System

Max. Ambient Temperature	+50°C, 60% RH
Min. Ambient Temperature	-10°C
Max. Seawater Temperature	+36°C
Min. Seawater Temperature	+4°C

DESIGN CRITERIA

	OPERATING	SURVIVAL
Water Depth	70.0 m	60.0 m
Air Gap	10.0 m	7.0 m
Wind Velocity	25.0 m/s	51.4 m/s
Max. Wave Height	5.0 m	6.0 m
Wave Period	6.5 s	7.5 s
Surface Current	1.1 m/s	0.5 m/s

CRANES

Main Craine	Huisman 300mt Pedestal Mounted Crane
Main Craine	300 t at 15m-main hoist 30 t at 60m-whip hoist
Auxiliary Crane	Liebherr 15 t Pedestal Mounted Crane
Capacity	15 t at 30m-main hoist 5 t at 35m-whip hoist

PROPUSLION SYSTEM

Thruster	4x1500kW Azimuth Thruster
Size	2.3 m Propeller diameter
Speed	8 Knots

ACCOMMODATION

Capacity	150 POB
	10x single Berth, 62x Double Berth, 4x Four Men Berth Galley, Mess Room, Laundry, Prayer Room, TV Room, Change Room, Internet Room, Gym, Coffee Room, Meeting Room, Office, WIFI Facility, Hospital

Details in this specification are correct at the time of publishing. However they may differ from time to time due to project specific alterations. Upon request project specific arrangements and specifications can be provided.